

Your Global Partner for Steel Structure Building.

CONTENTS

ABOUT US

Company Profile	4
-----------------	---

COMPANY STRENGTH DISPLAY

Manufacturing And Customer Service Capabilities	5
Technical Support And Project Management Capabilities	6

PRODUCT SYSTEM

Steel Structure Warehouse/Workshop	7
Poultry Farm	13
Cold Room	19
Wall And Roof Series	23
Cleanroom Panel	27
Cold Room Panel	31
Section Steel And Floor Decking	33
Accessories	35

PROJECT CASE

37

WEIZHENGHENG Buildings



ABOUT US

Established in 2001, Weizhengheng Group covers an area of 48,000sqm and has 9 subsidiary companies, more than 1000 employees and over 10 years of export experience. We have been awarded ISO9001-2000, CE and SGS certificates. Our daily capacity can reach 5,000 square meters and this is how we manage it.

Our company is mainly engaged in the production of various color steel coils, corrugated steel sheets and sandwich panel, as well as design, manufacture and installation of steel structure warehouse/workshop, poultry farm, cold room and prefabricated houses.

The design and development of light & heavy steel structure, building enclosure, thermal insulation, water heating systems and related construction equipment are the core technology. "We create quality, you enjoy life" is our business philosophy.

Weizhengheng Group has cultivated a number of high-quality professionals and on-site installation team. From the concept of the project, design to production, construction and installation, we always focus on customer's needs and provide the most scientific, reasonable and effective solution.



MANUFACTURING AND CUSTOMER SERVICE CAPABILITIES



先进的制造能力

- 卓越的生产现场管理
- 一流的生产设备
- 先进的生产技术
- 高素质的生产团队
- ISO9001质量认证体系
- 专业的现场加工服务



卓越的TPM生产管理模式

- 行业内率先导入，打造景观工厂
- 零化危险要因，打造零伤害管理体制
- 培养设备专家级操作、保全人员
- SOP标准化生产服务流程
- 2014年挑战世界优秀奖



高效的客户服务能力

- 便捷的一体化服务模式
- 高效快捷的交货期
- 安全的货物运输保证
- 高品质的产品包装服务

Advanced manufacturing capabilities

- Excellent production site management
- First-class production technology
- Advanced production technology
- High-quality production team
- ISO9001 quality certification system
- Professional on-site processing services

Excellent TPM production management

- The industry's first enterprise, building garden-style factory
- Zero disaster management system
- Expert-level training equipment operators and maintenance workers
- SOP-Standard operating procedures
- 2014 Challenge World Award of Excellence

Efficient customer service

- Convenient integration of service delivery model
- Highly efficient and quick delivery
- Safe transport of goods
- High quality product packing service

TECHNICAL SUPPORT AND PROJECT MANAGEMENT CAPABILITIES



方案设计和技术指导

- 项目咨询建议方案
- 个性化的设计方案
- 荷载及结构计算书
- 施工安装图
- 细部处理设计



专业的项目管理

- 全面项目管理
- 施工现场协调
- 安装指导
- 安装质量控制
- 现场安全监督
- 售后跟踪服务

Program design and technical guidance

- Project advice
- Personalized design programs
- Load and structural calculations
- Construction and installation diagram
- Detail treatment design

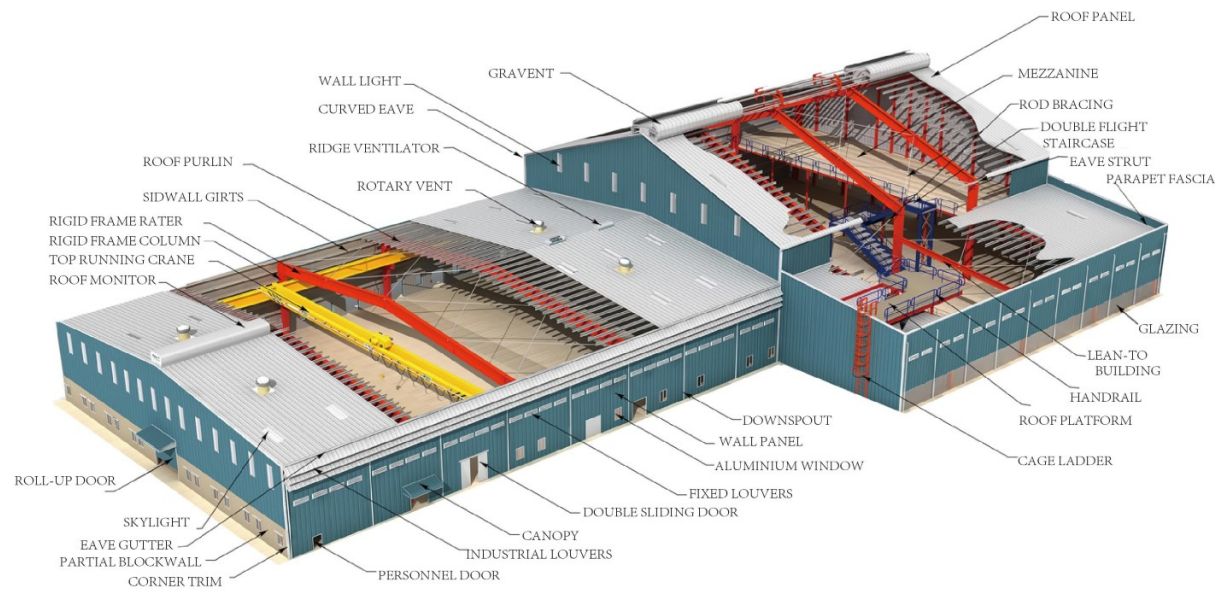
Professional project management

- Comprehensive project management
- Construction site coordination
- Installation instructions
- Installation quality control
- On-site safety supervision
- After-sales service tracking

WZH group has a team of professional technical and project management workers.

From the initial project design to project management, our professional technical staff are always with you to give the best architectural solution.

STEEL STRUCTURE WAREHOUSE/WORKSHOP

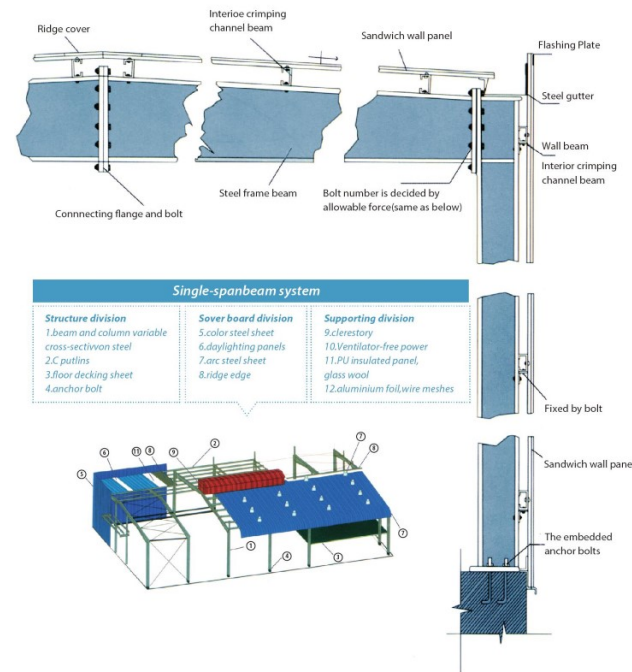
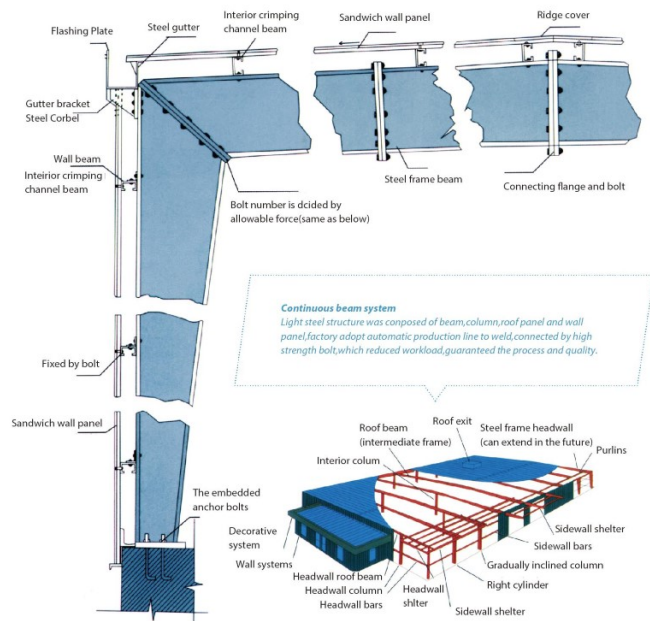


Introduction of steel structure system

Light steel structure building is a new type of building structure system, which is formed linking up H section, Z section, C section or U section steel components, roof and walls using a variety of panels and other components such as windows, doors, cranes, etc. Light steel structure building is widely used as warehouses, workshops, large factories...etc.



PORTAL FRAME STRUCTURE SERIES



The permanence of Metal construction shows as below several points:

Prefabricated light steel structure technology has broken through the difficulty of diversity and architectural aesthetics, not only widely applying to large space and span public and industrial construction, but also by its comfortable and spacious to have satisfied the increasing needs of commercial and residential market which has proved by many developed countries to be a shortcut of construction industry.

Structure reliable, anti-seismic, mothproof, antiglazing, it may be said the warranty of eternal quality. It is very easy to extend, the partition in the house can be changed at will, even can be moved integrally; No waste in construction, 66% and above of materials can be reused when removing.

Prefabricated metal construction is by its special advantages replacing timber structure, post and panel structure, even partially reinforced concrete structure, its development is the important measure of protecting forest and environment.

According to the western economists analysis, in the following 50 years it will be the puberty of the development of prefabricated metal structure construction, in 10 years our country's metal construction will increase progressively by 20%.

Due to adopt computer optimal design and industrialized production, metal construction has realized the perfect match of functionality. The steel volumes of big metal construction is equal to or lower than that of Reinforced Concrete construction; its cost is lower than traditional construction by 30%; it uses assemblage to make, work efficiency is high, construction time is shorter by a half or above, maintenance charge is very low.

MATERIAL

Main steel Frame

H section steel

Q345 steel 8mm/10mm

Welding

Automatic Submerged Arc Welding

Rust removing

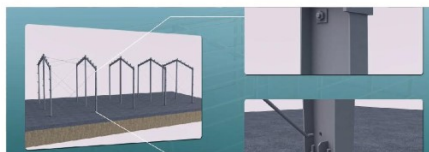
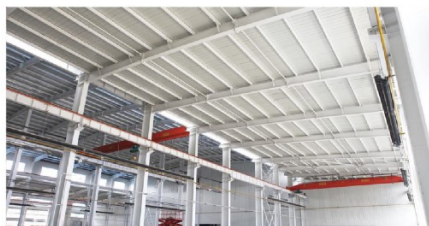
Sand blasting

Surface processing

Alkyd Paint or galvanized

Intensive bolt

Grade 10.9



Supporting System

Angle

150x4, Steel Q235, Process and painting

Cross support

φ20, Steel Q235, Process and painting

Belt bar

φ89*3, Steel Q235 Process and painting

Small brace

φ12, Steel Q235 Process and painting

Ordinary bolt

Galvanized bolt

Axial fan

Axial fan

Roof

Purlin

C160*60*2.5, Steel Q235, painting and Galvanized

Out-roof panel

Sandwich panel or corrugated steel plate

Transparent Lighting panel

6mm thick PVC

Accessories

Glass glue, self-tapping screw etc.

Edge cover

Made of color steel sheet thickness 0.5mm

Gutter

Made of color steel sheet thickness 0.8mm

Rainspout

φ110PVC



Wall

Purlin

C160*60*2.5, steel Q235, Paint

Wall

sandwich panel or corrugated steel plate

Accessories

Glass cement, self-tapping Screw etc

Edge cover

Made of color steel sheet thickness 0.5mm

Door & window

Rolling door/sliding door PVC/alu/steel window

Crame

With or without crame in 5 tons to 20 tons

POULTRY FRAM HOUSE



Poultry farm house is a new type of steel building which is very popular all over the world, it is widely used to feed broiler, layer, duck, etc. It is easy transport, installation, low investment, and environment friendly.

Because of different countries have distinct climate, market and habits requirements. Generally the width of broiler house is 12m-16m, length is less than 150m, height is 2.1m-3m (for free range) or 2.5m-4.5m(in A type cage or H type)

Our steel structure design poultry farm can be built with different construction methods, close type (sandwich panel for wall and roof, also you can choose the ceiling type) and open type(sandwich panel or steel sheet& aluminum bubble foil for roof, no wall or wire mesh&curtain for wall).

Also you can give us your thoughts, we will help you to realize it.

Also we can instruduce our partner (the equipment supplier) to you (cage system and flooring system, then we work together to provide more workable project for you.

PREFAB STEEL COW FARM

Prefab steel cow farm building is a kind of light steel structure building in cow farm, the frame of the building consists of H section steel columns, H section steel beams and C or Z section purlins. Generally there are two types of cow house according to local environment and customer requirement, one is open type, the other is close type. Usually dairy cow house is close type which has whole wall and roof, some windows on wall. this type of cow house is less affected by the environment. According to the width of cow house, you can feed one row or two rows or multiply rows cow.



Equipment For Cow Shed

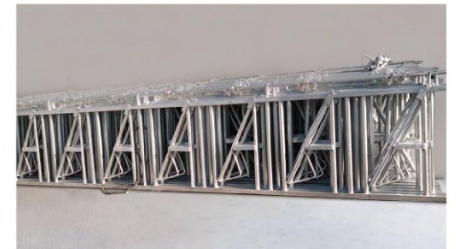
We also can supply the equipments for cow shed, like cow free stalls, headlock and exhaust fan, then to provide more workable project for you.



Cow Free Stalls



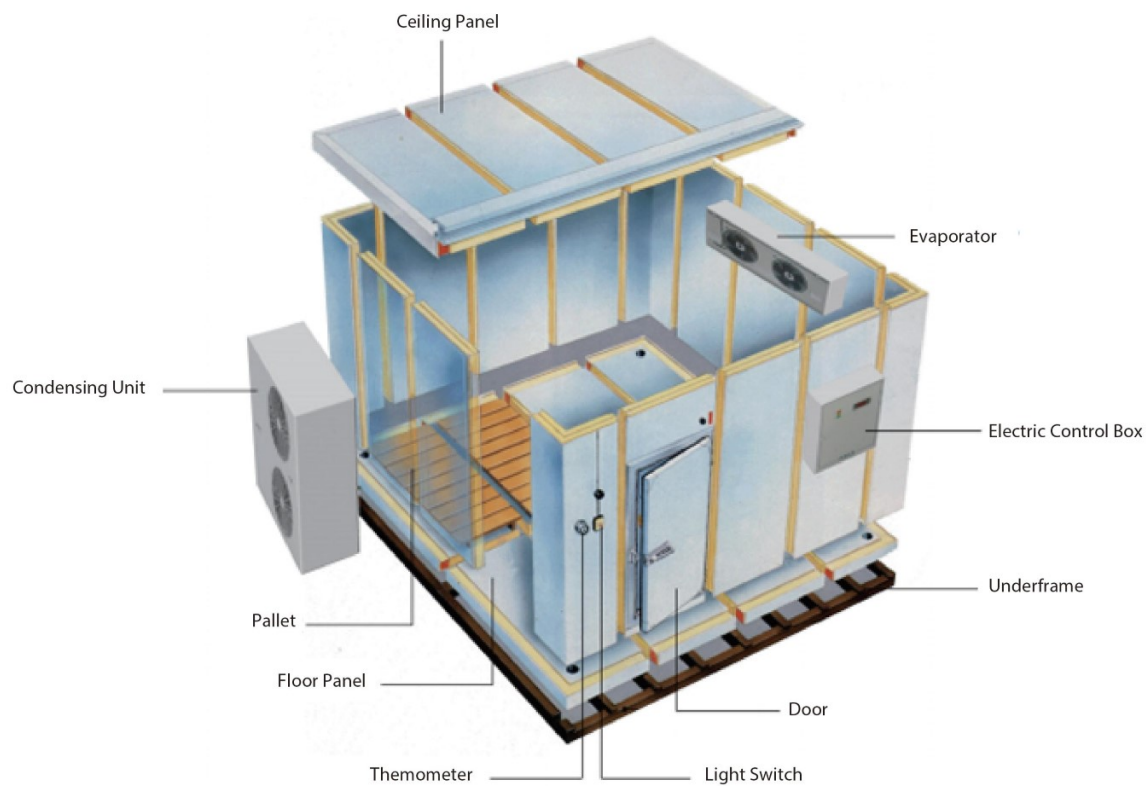
Cattle Headlock



Poultry Exhaust Fan



COLD ROOM



Room size type

Room size	small	middle	big
volume range	<500m ³	500m ³ ~5000m ³	>5000m ³

Panels information

office Foam panel	50mm thickness
processing room 10 °C	50mm/ 75mm PU
5 °C	75mm/ 100mm PU
-18 °C	100mm/ 150mm PU
-25 °C / -35 °C	150mm/200mm PU
panel steel cover	SS, GI, aluminum etc

Tempreture table for reference

cold storage goods	tempreture range
processing room	10 °C
fruit, vegetable, dry food	0 °C ~ -5 °C
medicine, cake, pastry, chemical material	0 °C ~ -5 °C
ice storage room	-5 °C ~ -10 °C
fish, meat storage	-18 °C ~ -25 °C
deep freezer	-25 °C ~ -35 °C

Compressor type and condenser

compressor type	bitzer(Germany)	refcomp(italy)	copeland(US)	manurope(France)
condenser	air cooled	water cooled	evapoarating	

Cold Storage



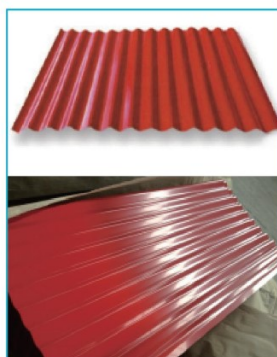
Cold Room



WALL AND ROOF SERIES

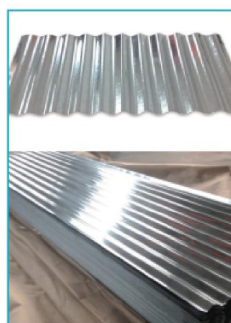
Pre-Painted Corrugation Steel Sheet

Thickness(mm)	0.15mm-1.2mm
Width before corrugation	762mm-1250mm
Width after corrugation	665mm-1090mm
Length	1800mm-4000mm
Basic Zinc/Alu-Zinc Coating	Z60-Z180/AZ50-AZ275
Hardness	Normal Soft/Semi Hard/Full Hard
Pre-Paint Coating	12μm-25μm
Paint Material	PE/PVDF
Color	Any Color



Galvanized/Galvaume Corrugation Steel Sheet

Thickness(mm)	0.14mm-1.2mm
Width before corrugation	762mm-1250mm
Width after corrugation	665mm-1090mm
Length	1800mm-4000mm
Basic Zinc/Alu-Zinc Coating	Z60-Z180/AZ50-AZ275
Hardness	Normal Soft/Semi Hard/Full Hard
Galvanized Sheet Spangle	None Spangle/Regular Spangle/Big Spangle
Galvalume Sheet Surface Treatment	Anti-finger/None Anti-finger

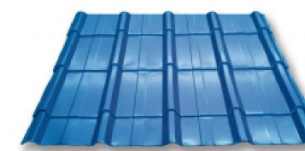


YX25-207-828(Antique tiles)



Thickness	Effective Width	Total Width	Wave Height	Wave	Wave Distance	Step Distance
0.15mm-1.2mm	828mm	900mm	25mm	207mm	4Waves	200mm-300mm

YX25-210-840(Glazed tile)



Thickness	Effective Width	Total Width	Wave Height	Wave	Wave Distance	Step Distance
0.15mm-1.2mm	840mm	910mm	25mm	210mm	4Waves	200mm-300mm

YX27-190-750/950



750

Thickness	Effective Width	Total Width	Wave Height	Wave	Wave Distance	Step Distance
0.15mm-1.2mm	750mm	900mm	27mm	190mm	4Waves	200mm-300mm

950

Thickness	Effective Width	Total Width	Wave Height	Wave	Wave Distance	Step Distance
0.15mm-1.2mm	950mm	1000mm	27mm	190mm	5Waves	200mm-300mm

YX25-210-840/1050



840

Thickness	Effective Width	Total Width	Wave Height	Wave	Wave Distance
0.15mm-1.2mm	840mm	910mm	25mm	210mm	4Waves

1050

Thickness	Effective Width	Total Width	Wave Height	Wave	Wave Distance
0.15mm-1.2mm	1050mm	1100mm	25mm	210mm	5Waves

YX40-320-960/YX38-320-980



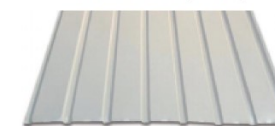
960

Thickness	Effective Width	Total Width	Wave Height	Wave	Wave Distance
0.15mm-1.2mm	960mm	1050mm	40mm	320mm	2-3Waves

980

Thickness	Effective Width	Total Width	Wave Height	Wave	Wave Distance
0.15mm-1.2mm	980mm	1050mm	38mm	320mm	2-3Waves

YX10-130-910(V-910)



Thickness	Effective Width	Total Width	Wave Height	Wave	Wave Distance
0.15mm-1.2mm	910mm	950mm	10mm	130mm	7Waves

YX35-125-750(V-125)



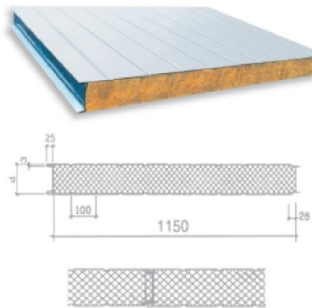
YX15-225-900(V-900)



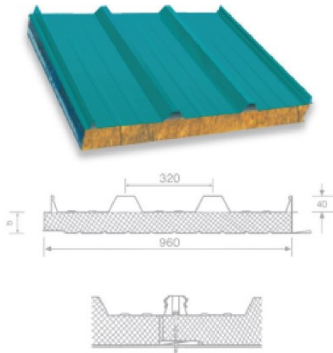
ROCKWOOL SANDWICH PANELS

Rock wool sandwich panels are made by color filament fibers of rock wool in the core, they are profiled by automated continuous forming machine and adhesive bonded later. They have the excellent fire performance because the color steel plate and rock wool materials are fireproof.

Rock Wool Sandwich Wall Panel



Rock Wool Sandwich Roof Panel



Specification Roof Panel

Thickness(mm)	75	100	120	150	200
Length(mm)	Arbitrary Length, according to the transportation generally less than 12m				

Specification Roof Panel

Thickness(mm)	50	75	100	120	150
Width(mm)	1150				
Length(mm)	Arbitrary Length, according to the transportation generally less than 12m				

Weight Roof Panel

Thickness(mm)	75	100	120	150
Plate Weight(kn/㎡)	0.263	0.301	0.338	0.391

Weight Wall Panel

Thickness(mm)	50	75	100	120	150	200
Plate Weight(kn/㎡)	0.263	0.301	0.338	0.391	0.289	0.352

Heat Transfer Coefficient

Thickness(mm)	50	75	100	120	150	200
Heat transfer coefficient(w/㎡·k)	0.749	0.530	0.411	0.327	0.268	0.210
Kcao/㎡·h·c	0.644	0.456	0.353	0.281	0.230	0.181

Mechanical Properties

The Maximum Span Of Rock Wool Sandwich Panel(m)(Applicable To Roof)

Thickness(mm)	75	100	120	200
Wind Load(kn/㎡)				
0.5	3.6	4.2	4.8	5.5
1.0	3.1	3.7	4.3	5.2
1.5	2.7	3.3	3.8	4.6
2.0	2.4	3.0	3.7	4.3

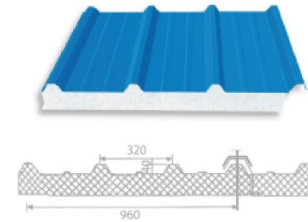
The Maximum Span Of Rock Wool Sandwich Panel(m)(Applicable To Wall)

Thickness(mm)	50	75	100	120	150	200
Wind Load(kn/㎡)						
0.5	1.71	2.87	3.61	4.35	5.22	7.21
1.0	1.36	2.31	2.85	3.41	4.10	5.17
1.5	1.20	2.00	2.49	3.00	3.62	5.00

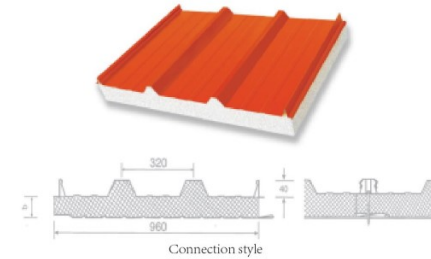
Note: The above thickness is the thickness of insulation layer

EPS SANDWICH PANELS

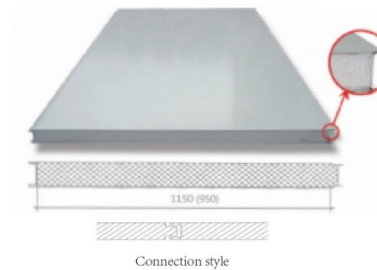
YX40-320-960 (Over Lap Roof Panel)



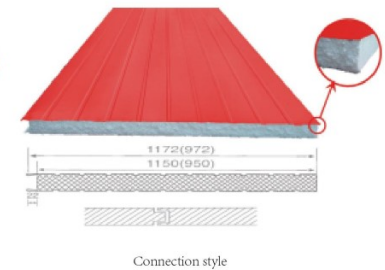
YX40-320-960 (Joint Hidden Roof Panel)



Cleanroom Panel

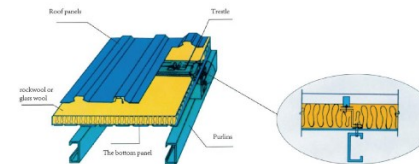


EPS Sandwich Roof Panel



APPLICATION MAKING SANDWICH PANEL IN WORKSITE

1. Applicable to rock wool, glass wool etc. Insulation material which always used in warehouse and houses which need high fireproofing grade
2. Applicable to long span flat roof house
3. Applicable to the connection of different sandwich panel type
4. Applicable to complicated shape panel and shaping plate to curve



Construction drawings



CLEANROOM PANEL

Products Introduction

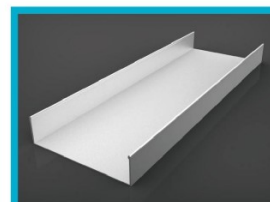


净化板可采用岩棉、玻璃丝绵、EPS（泡沫）、XPS（挤塑板）等各种芯材、彩钢板、镀锌板、镀锌铝锌板、不锈钢、印花钢板、PVC等多种材料。利用手工工艺或机制成复合板。可广泛应用于电子、制药、食品、生物、航天航空、精密仪器制造及科研等对室内环境要求苛刻的净化工程领域。

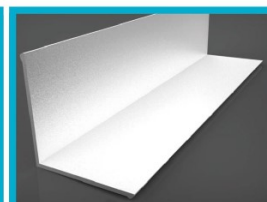
The insulation of clean panel can be chose rock wool, glass wool, PU, or EPS. The surface can be PPGI, GI, galvanized sheet, aluminium zinc plate, stainless steel, printing steel plate, aluminium foil paper, PVC and Plywood. It can be widely used in electronics, pharmaceutical, food, biotechnology, aerospace and precision instrument manufacture and research.



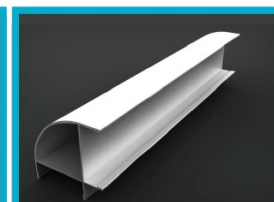
ALUMINUM PROFILES



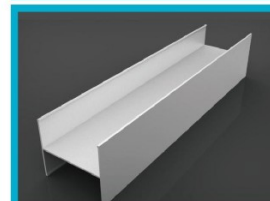
U channel



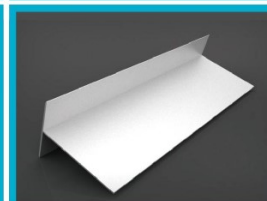
L Angle



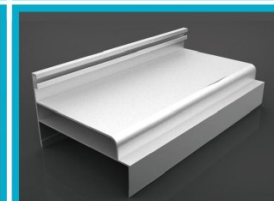
Outside corner



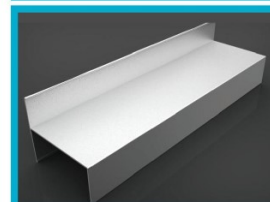
H Channel



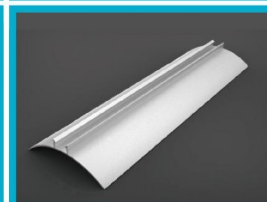
Aluminum T-Girder



New style door frame



Old style window frame



Inside corner (1)



Inside corner (2)



Window frame



Outside arc



Floor coving end piece to door



Corner point

Z-LOCK CONNECTION SANDWICH PANEL

Powerful fastening with the Z-Lock System. The profiles of the panels have been designed for sturdiness as well as for flexibility which can take into account future expandability and modifications. The technologically-advanced and unique Z-Lock system interlocks the panels together ensuring trouble-free operations.

Lapped joint sandwich roof panel



Top steel sheet width before corrugated: 1200m		Bottom steel sheet width before corrugated: 1000m
Thickness: 50-200mm	Surface style: four wave	Core material: quartzite, propor, and EPS, etc.

Z lock joint sandwich wall panel



Top steel sheet width before corrugated: 1200mm(1000m)		Bottom steel sheet width before corrugated: 1200mm(1000m)
Thickness: 50-200mm	Surface style: reinforcing rib, slight wave, flat, V type rib	Core material: quartzite, propor, and EPS, etc.

Z-LOCK CONNECTION SANDWICH PANEL

Schematic diagram of joint way

Top steel sheet

Waterproof washer

Core material

Bottom steel sheet

Top steel sheet

Core material

Bottom steel sheet

Quality characteristics:

- 1.No thermal bridge.
- 2.Superior sealing performance, will provide better heat preservation effect.
- 3.0.05-0.07mm film, easy to take off
- 4.Light weight, convenient for transport and installation

Application:

Sandwich panel usually use to building large-scale workshop,warehouse,gym,shopping market,hospital,cold storage,trailer park, appendant as building,clearoom and thermal insulation park.

without thermal bridge

HEAT

without thermal bridge

HEAT LOSS

0.05-0.07mm film easy to take off

Density 12-18kg/m³, light weight, convenient for transport and installation

Red color available, beautiful appearance

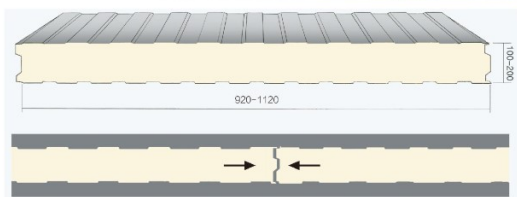
Excellent waterproof appearance

Good performance of the EPS and excellent joint will provide better heat preservation effect.

Superior connection, superior sealing performance

COLD ROOM PANEL

PU Sandwich panel (Polyurethane sandwiched panel) is composed of 2 layers of weather-proof colored steel sheets and jetted the hard forms of polyurethane between 2 layers which feature fireproof materials. It is suitable for the various roofs and walls referring to the large-size factory buildings, storages, exhibition halls, gymnasiums, freezing stores, purifications workshops, etc, which features temp-keeping, heat insulation, weight-bearing, weatherproof with the rich colorfulness and good appearance.



The cam lock (panel fastener) is an embedded part in the walk-in freezer & cooler panel, which is fixed to the inside frame of the panel mold before panel foaming through the adapter. It is a professional tool used for producing and assembling the panels of walk-in freezer & cooler. It is made of plastic (ABS) or galvanized steel.



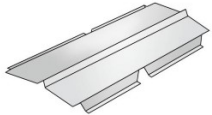



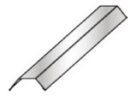
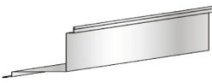
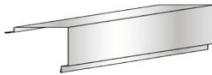
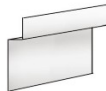
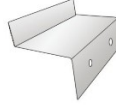
To assemble a walk-in freezer & cooler panel, you just need turn the wrench and then the walk-in freezer & cooler panels will be connected closely. To expand or remove a walk-in freezer & cooler panel, you just need turn the wrench reversely and then the panels will be separate.

The cam lock has a good performance in self-locking, strength and service life.



ACCESSARY SYSTEM

名称 NAME	图像 GRAPHICS	材料 MATERIAL	规格 SPECIFICATIONS
Raphe molding	Locating slot 	Color coated steel	85×30
Self-tapping screw	Sealing washer 		
waterproof rivet			
Suturing nail	Sealing washer 		
Ridge-I		Color coated steel sheet	
Ridge-II		Color coated steel sheet	

名称 NAME	图像 GRAPHICS	材料 MATERIAL	规格 SPECIFICATIONS
Internal ridge		Color coated steel sheet	
External gutter brace		Color coated steel sheet	
External corner flashing-I		Color coated steel sheet	
I External corner flashing-II		Color coated steel sheet	
Eaves bending		Color coated steel sheet	
Bracket		galvanized steel sheet	

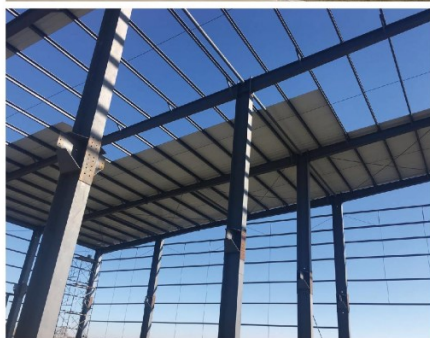
Far East Wood Factory Project



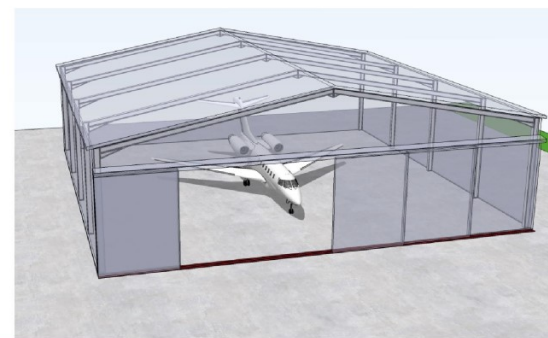
WZH Workshop Project



Xinyi Cable Project



Aircraft Hangars



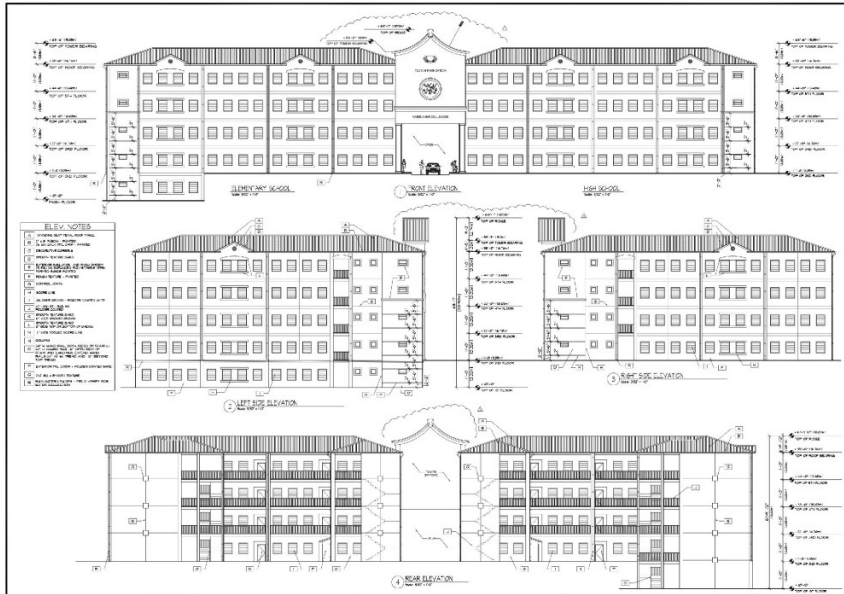
Prefabricated Broiler Poultry Farm House Project



Prefab Steel Cow Farm Building Project



Haiti School Steel Structure Project



Cold Storage Project



Production Equipments



Package & Loading



CERTIFICATION

